

# Marine Series

- **Receptacle, plug, cable connecting plug**
- **Locking** : Coupling of the plug is provided by a knurled ring which screws on to the threaded shell of the receptacle.
- **Protection** : IP 68
- **Contacts** : 3 to 37 contacts : Ø1mm - Ø1,6mm - Ø2,4mm crimping or soldering type contacts.
- **Max current rating** : 7A Ø1mm - 15A Ø1,6mm 30A Ø2,4mm - in consideration of the number of contacts carrying the current, their diameters, and the temperature increase which is permissible.
- **Contact resistance between pin and socket** : <0.0020Ω Ø1mm - <0.0015Ω Ø1,6mm - <0.0010Ω Ø2,4mm

- **Flashover voltage** : at (20°C) 68°F, at sea level greater 4, 19, 37 cts Ø1mm >2000 V r.m.s 3, 7, 12, 19, 27 cts Ø1mm >2500 V r.m.s Ø1,6mm >2500 V r.m.s - Ø2,4mm >2500 V r.m.s
- **Insulation resistance** : >5000 MΩ
- **Operating temperature range** : - 40°C to +100°C (500 hours at +125°C).
- **Raw material** : body : ARCAP, male and female contacts : brass with gold finish, insulator : neoprene
- **Max, wire cross section area** : 0,93 mm² Ø1mm - 1,93 mm² Ø1,6mm - 3,18 mm² Ø2,4mm.



**Material non-ferrous alloy : ARCAP**

**Part numbers : Pin insert receptacles, socket insert plugs and cable connecting plugs, pin insert**

Shell size	Number of contacts	Ø contacts	circular receptacle pin insert	receptacle pin insert	Socket insert plug	Cable connecting plugs pin insert	Cable dia. for cable-clamp mini. max.	Protection caps receptacle	Protection cap plug	Adjustable crimping tool
1	12			637 012 006	638 012 006	639 012 006	9 14	637 820 006	638 820 006	579 481 006
1	19	Ø1mm		637 019 006	638 019 006	639 019 006	9 14	637 820 006	638 820 006	Réglage: Ø1mm rouge Ø1,6mm bleu Ø2,4mm jaune
2	27			637 027 006	638 027 006	639 027 006	12 18	637 825 006	638 825 006	
2	37			637 037 006	638 037 006	639 037 006	12 18	637 825 006	638 825 006	
1	3	Ø1.6mm	637 203 606	637 203 006	638 203 006	639 203 006	9 14	637 820 006	638 820 006	Combined insertion and extraction tool for contacts*
1	4		637 204 606	637 204 006	638 204 006	639 204 006	9 14	637 820 006	638 820 006	
1	7		637 207 606	637 207 006	638 207 006	639 207 006	9 14	637 820 006	638 820 006	
2	12		637 212 606	637 212 006	638 212 006	639 212 006	12 18	637 825 006	638 825 006	Ø1mm 597 104 006
1	3	Ø2.4mm		637 403 006	638 403 006	639 403 006	9 14	637 820 006	638 820 006	Ø1.6mm 577 454 006
1	4			637 404 006	638 404 006	639 404 006	9 14	637 820 006	638 820 006	Ø2.4mm
2	7			637 407 006	638 407 006	639 407 006	12 18	637 825 006	638 825 006	577 458 006

**Part numbers : Socket insert receptacles, pin insert plugs and cable connecting plugs, socket insert**

Shell size	Number of contacts	Ø contacts	circular receptacle Socket insert	receptacle Socket insert	Pin insert plug	Cable connecting plug, socket insert	Cable dia. for cable-clamp mini. max.	Protection caps receptacle	Protection cap plug	Adjustable crimping tool
1	12			637 112 006	638 112 006	639 112 006	9 14	637 820 006	638 820 006	579 481 006
1	19	Ø1mm		637 119 006	638 119 006	639 119 006	9 14	637 820 006	638 820 006	Réglage: Ø1mm rouge Ø1,6mm bleu Ø2,4mm jaune
2	27			637 127 006	638 127 006	639 127 006	12 18	637 825 006	638 825 006	
2	37			637 137 006	638 137 006	639 137 006	12 18	637 825 006	638 825 006	
1	3	Ø1.6mm	637 303 606	637 303 006	638 303 006	639 303 006	9 14	637 820 006	638 820 006	Combined insertion and extraction tool for contacts*
1	4		637 304 606	637 304 006	638 304 006	639 304 006	9 14	637 820 006	638 820 006	
1	7		637 307 606	637 307 006	638 307 006	639 307 006	9 14	637 820 006	638 820 006	
2	12		637 312 606	637 312 006	638 312 006	639 312 006	12 18	637 825 006	638 825 006	Ø1mm 597 104 006
1	3	Ø2.4mm		637 503 006	638 503 006	639 503 006	9 14	637 820 006	638 820 006	Ø1.6mm 577 454 006
1	4			637 504 006	638 504 006	639 504 006	9 14	637 820 006	638 820 006	Ø2.4mm
2	7			637 507 006	638 507 006	639 507 006	12 18	637 825 006	638 825 006	577 458 006

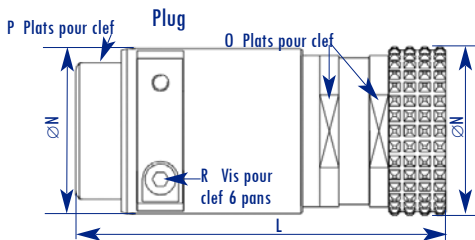
\*Note : tool, part. No 597 104 006 Ø1mm and 577 454 006 Ø1,6mm and 577 458 006 Ø2,4mm is necessary, for insertion and extraction contacts.

Both front and back of plug and receptacle inserts have numbers for easy contact identification.

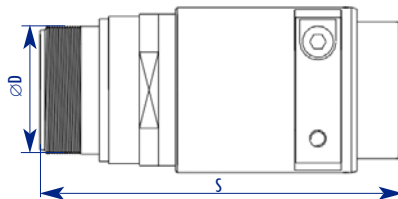
- Ø1.6mm et Ø2.4mm, the contact No.1 establishes the electrical connection first and breaks it last. So this contact can be used for earthing purposes.

If this contact needs to be connected to the earth of the casing, insert the small plate provided for this purpose behind the two parts of the connector and between the casing and the earth contact.

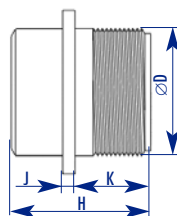
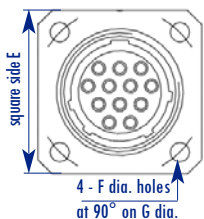
**Dimensions :**



Cable connecting plug



Receptacle



Shell size	Receptacle								Plug - Cable connecting plug				
	D	E	F	G	H	J	K	L	N	O	P	R	S
1	21	27	3,2	28	23	2	12,5	70	29	26	24	2,5	69
2	27	32	3,2	34	23,5	2	12,5	78	36	32	30	3	80